

Measurement Systems

WLT-400

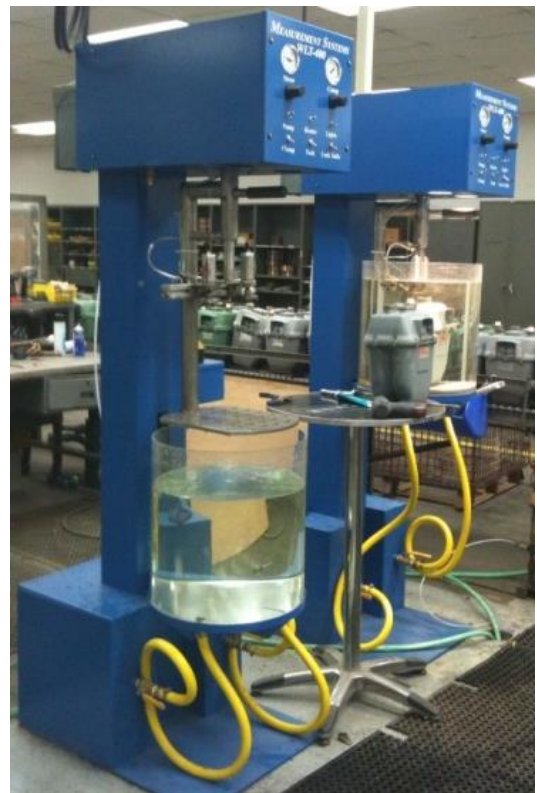
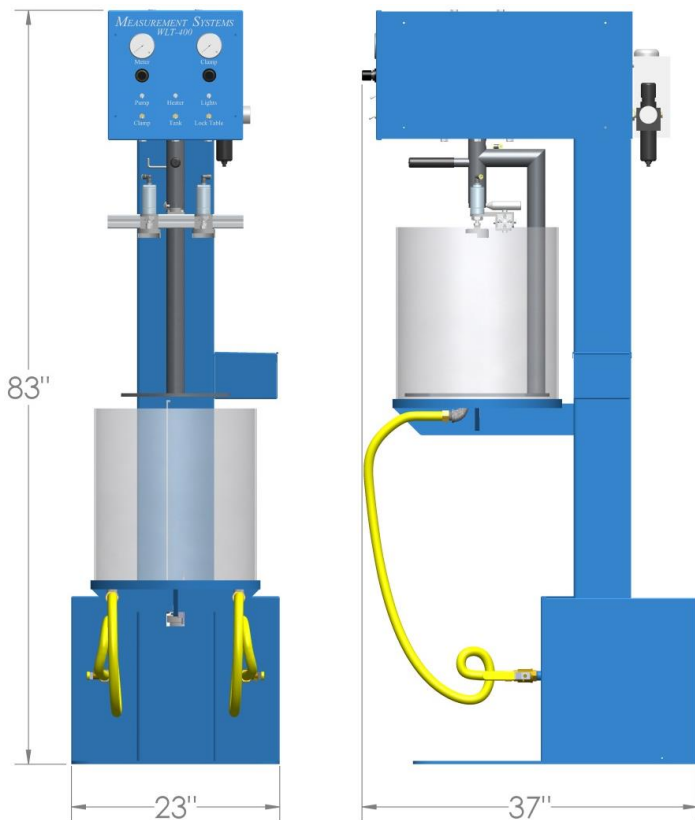
General Specifications:

- Capacity: Up to and including 400 CFH class meters
- Thermostatically controlled water heater
- Circulating pump
- Water filter
- Rotating meter stand to view meter a full 360° while standing in front of the tester
- Circular tank optically magnifies the meter for easy leak location detection
- Stuffing box leak test valve to cycle meter at testing pressure

Requirements:

- Power: 120vac at 30 amps
- Compressed Air Supply: 90 psi at 5 CFM
- Water Drain/Supply: standard hose connection

Dimensions: (83" Height x 23" Width x 37" Depth)



ONEOK (Oklahoma Natural) WLT-400 Installation

Current Customers:

- PGW (Philadelphia Gas Works) - (4) WLT-400
- ONEOK - (2) WLT-400 & (1) WLT-800
- Con Edison - (1) WLT-400 & (1) WLT-800
- Columbia Gas of Massachusetts - (2) WLT-400
- National Grid (Boston) - (2) WLT-400 (2) WLT-800HP
- National Grid (RI) - (1) WLT-400 (2) WLT-800HP
- Questar Gas Company - (1) WLT-400
- New Jersey Natural Gas - (1) WLT-400
- PG&E - (2) WLT-400
- Washington Gas - (1) WLT-400
- NYSEG - (1) WLT-400
- National Fuel - (2) WLT-400
- National Grid (Niagara Mohawk) - (2) WLT-400
- National Grid (Brooklyn) - (1) WLT-400 (1) WLT-800HP
- IMAC - (1) WLT-800HP
- PSE&G - (1) WLT-400
- McJunkin - (1) WLT-400
- Mountaineer Gas Company - (1) WLT-400

Measurement Systems
6217 Stoney Hill Rd.
New Hope, Pa 18938

(215) 862-3090 Fax (215) 862-3449

Email SalesInfo@MeasurementSystems.com